

The Great Grid Upgrade: Grimsby to Walpole Stage 2 (statutory) consultation feedback form

Page 1 of 17

Survey Closes 06 Aug 2025

Our Stage 2 (statutory) consultation

National Grid Electricity Transmission plc (National Grid) is consulting on proposals to build a reinforcement to the electricity transmission network between Grimsby and Walpole.

This is our second public consultation on our proposals for Grimsby to Walpole. It is called a statutory consultation because it is being carried out in line with the formal requirements of the Planning Act 2008.

It follows our previous Stage 1 (non-statutory) public consultation on our draft proposals which were held in Spring 2024.

This Stage 2 consultation is open between **Wednesday 11 June 2025 and 11:59pm on Wednesday 6 August 2025**.

The Grimsby to Walpole project meets the criteria to be classified as a Nationally Significant Infrastructure Project. Other examples of Nationally Significant Infrastructure Projects include new airports, major roads, renewable energy projects and power stations. These types of projects require a special type of planning permission, known as a Development Consent Order (DCO).

Consultation is an important part of the DCO process, as it enables everyone to comment on our proposals. Feedback from our consultations – along with the outcome of technical assessments and environmental surveys – helps us to develop our proposals before we submit our DCO application to the Planning Inspectorate.

CONTINUE

Powered by **Tractivity**

The Great Grid Upgrade: Grimsby to Walpole Stage 2 (statutory) consultation feedback form

Page 2 of 17

Survey Closes 06 Aug 2025

Our proposals

Our proposals have been revised in light of feedback received at our previous Stage 1 (non-statutory) consultation in Spring 2024.

More information on our Stage 1 consultation and how the feedback received helped influence and shape the proposals can be found in the Non-statutory Consultation Feedback Report, available on the project website at nationalgrid.com/g-w. As part of our Stage 2 consultation we are asking for your feedback on all aspects of the Project, including:

- approximately 140 km of new 400 kV overhead transmission line
- a new 400 kV substation to be built in the vicinity of the existing Grimsby West 400 kV Substation in North East Lincolnshire (to be referred to as New Grimsby West Substation). The existing substation would be decommissioned, in all, or part. The extent of decommissioning will be determined and reported in the Environmental Statement
- two new 400 kV Lincolnshire Connection substations located south-west of Mablethorpe in East Lindsey (to be referred to as Lincolnshire Connection Substation A and Lincolnshire Connection Substation B)
- up to two new 400 kV substations in the vicinity of Spalding Tee-Point in South Holland District (to be referred to as Weston Marsh Substation A and Weston Marsh Substation B)
- a new 400 kV substation in proximity to the existing Walpole Substation west of the village of Walpole St Andrew and north of the town of Wisbech, in King's Lynn and West Norfolk District (to be referred to as Walpole B Substation)
- replacement of short sections of existing 400 kV overhead line and local changes to the lower voltage distribution networks to facilitate the construction of the new overhead line and substations
- other required works, including temporary and permanent diversions for existing overhead line routes, temporary access roads, highway works, and various work sites. This encompasses temporary works compounds (areas designated for storage and preparation), work sites (locations where construction activities take place), and ancillary works (additional supportive structures necessary for the main construction activities)
- land required for mitigation and enhancement of the environment, delivering an overall biodiversity net gain (BNG). This includes working with regional and local partners to identify BNG opportunities in parallel with the development of the Project design, as well as accommodating various temporary construction activities such as working areas for construction equipment and machinery, site offices, storage, accesses, bellmouths (vehicle accesses), haul roads, watercourse crossings, and the diversion of public rights of way.

Preliminary Environmental Information Report

We are also consulting on the preliminary findings from our environmental studies and assessments as well as preliminary mitigation proposals.

Full details of this can be found in our Preliminary Environmental Information Report (PEIR), available on the [project website](#).

The Great Grid Upgrade: Grimsby to Walpole Stage 2 (statutory) consultation feedback form

Page 3 of 17

Survey Closes 06 Aug 2025

Further information

As part of this consultation, we have also published:

- [Stage 2 consultation document](#): outlines our proposals, along with information about where to find out more and how to get involved in the consultation
- [Strategic Options Report \(SOR\)](#): explaining the strategic options considered, and the strategic option proposed, to deliver the necessary network upgrade
- [Corridor Preliminary Routeing and Siting Study Report \(CPRSS\)](#): providing detailed information on the components of Grimsby to Walpole, including the need, the options considered, the routeing and siting options assessed, our proposed options and a summary
- [Preliminary Environmental Information Report \(PEIR\)](#): considers the likely significant effects of our proposals on the environment, along with the measures we are proposing to mitigate these impacts. We have also published a non-technical summary of the PEIR.
- [Overview and individual route section maps](#): showing the proposed locations for each of the elements of Grimsby to Walpole
- [Community newsletter](#): summarising details of the Grimsby to Walpole project and our public consultation
- [Stage 1 consultation report](#): details how stakeholders and the public were informed; describes the proposals that we consulted on; gives a summary of the feedback received; and provides responses to specific questions and suggested changes
- [Statement of Community Consultation \(SoCC\)](#): sets out our approach to consulting with the local community on our proposals and has been developed in consultation with all local authorities in the project area.

All of these documents are available to download from our project website at nationalgrid.com/g-w.

Printed copies of most of our consultation documents are available free of charge on request. These can be requested via emailing contact@g-w.nationalgrid.com or by calling **0808 258 4395**. Some detailed technical documents may be subject to a printing charge.

Key consultation documents will be available to view at local information points (see page 49 of our Stage 2 consultation document for details), and printed copies of all documents listed above will be available to view at our consultation events (details can be found on the project website, on page 47 of our Stage 2 consultation document and in the Community Newsletter).

Changes to the project

Feedback received during our Stage 1 consultation in Spring 2024 has resulted in a number of changes to the project, so it's important to review our plans carefully even if you have previously provided feedback.

Information on the refined proposals we are now consulting on is available in the Stage 2 consultation document and the Preliminary environmental information report (PEIR), which sets out the preliminary findings from the environmental studies and assessments we are carrying out to develop our proposals.

[BACK](#)

[CONTINUE](#)

© 2017 Tractivity Ltd. All rights reserved. Tractivity is a registered trademark of Tractivity Ltd.

Powered by **Tractivity**

The Great Grid Upgrade: Grimsby to Walpole Stage 2 (statutory) consultation feedback form

Page 4 of 17

Survey Closes 06 Aug 2025

How to provide your feedback

Please submit your response to this consultation by **11:59pm on Wednesday 6 August 2025**. We cannot guarantee that responses received after this time will be considered.

Your feedback will play an important part in shaping our plans before we submit our application for planning consent, in Summer 2027.

It is not necessary to complete all of the questions if you do not wish to.

Our development consent order application will include a Consultation Report, which will show how we have taken account of feedback received to all stages of consultation.

We encourage you to read our consultation materials and take the opportunity to ask any questions before providing your feedback.

Identifying the locations of specific pylons and other infrastructure

Where possible, we encourage you to refer to specific locations that are most important to you.

Project maps and the [interactive project map](#) provide the numbers we are using to identify pylons, and show the areas where substations/converter stations are proposed. This information will help you to provide feedback, and the maps can be viewed at the public information events and on the project website at nationalgrid.com/g-w.

A [Guide to Interacting with our Consultation Plans](#) has also been published to help you navigate to the maps and plans most relevant to you.

If you wish to receive paper copies of the consultation documents or need them in another format, please get in touch by freephone on **0808 258 4395** or by email at contact@g-w.nationalgrid.com (please note print charges may apply).

[BACK](#)

[CONTINUE](#)

The Great Grid Upgrade: Grimsby to Walpole Stage 2 (statutory) consultation feedback form

Page 5 of 17

Survey Closes 06 Aug 2025

Section Navigation



Page Selection

Please select from the options below and click CONTINUE to navigate to the relevant sections of the route.

If you do not wish to comment on any specific section of the route, please select 'General Considerations' and click CONTINUE.

Route section 1 - New Grimsby West Substation

Route section 2 - New Grimsby West Substation to Lincolnshire Connection Substation A

Route section 3 - Lincolnshire Connection Substation A and Lincolnshire Connection Substation B Substations

Route section 4 - Lincolnshire Connection Substation B to Refined Weston Marsh Substation Siting Zone

Route section 5 - Refined Weston Marsh Substation Siting Zone

Route section 6 - Refined Weston Marsh Substation Siting Zone to Walpole B Substation

Route section 7 - Walpole B Substation

General considerations

BACK

CONTINUE

Powered by **Tractivity**

The Great Grid Upgrade: Grimsby to Walpole Stage 2 (statutory) consultation feedback form

Page 6 of 17

Survey Closes 06 Aug 2025

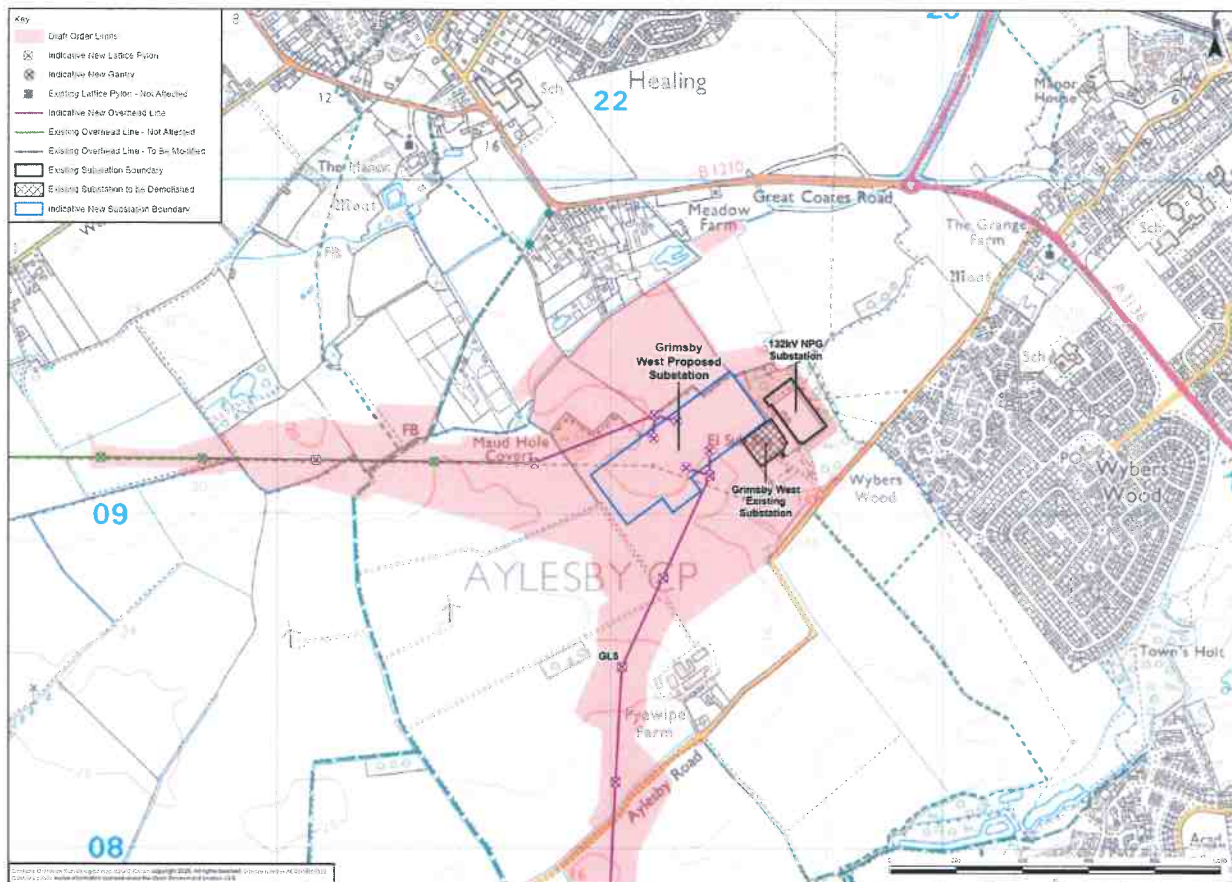
Route section 1 - New Grimsby West Substation

Please refer to the Stage 2 consultation document, Design development report and Preliminary environmental information report (PEIR) for more information on our proposals in Route section 1, including how we selected our preferred route alignment.

How our plans have developed since the Stage 1 consultation

We are proposing to site the new substation adjacent to the existing 400 kV National Grid Electricity Transmission substation. This location was chosen to reduce construction impacts associated with diverting existing overhead lines and underground cables. Also this makes use of land already within National Grid's ownership and existing screening opportunities to reduce potential visual and amenity impacts to nearby residential areas.

Route section 1 New Grimsby West Substation



1. Do you have any comments on Route section 1, including on the points listed below?

- The siting, design and appearance of the new substation.
- Our preferred alignment for the overhead line.
- Our proposals for construction, including temporary and permanent access roads and tracks, compounds and associated requirements.
- The Preliminary environmental information report.
- Environmental mitigation and opportunities for biodiversity net gain.

Page Selection

Please select from the options below and click CONTINUE to navigate to the relevant sections of the route.

If you're finished commenting on specific sections of the route, please select 'General Considerations' and click CONTINUE.

[Route sections map](#)

Route section 2 - New Grimsby West Substation to Lincolnshire Connection Substation A

Route section 3 - Lincolnshire Connection Substation A and Lincolnshire Connection Substation B Substations

Route section 4 - Lincolnshire Connection Substation B to Refined Weston Marsh Substation Siting Zone

Route section 5 - Refined Weston Marsh Substation Siting Zone

Route section 6 - Refined Weston Marsh Substation Siting Zone to Walpole B Substation

Route section 7 - Walpole B Substation

General considerations

BACK

CONTINUE

Powered by **Tractivity**

The Great Grid Upgrade: Grimsby to Walpole Stage 2 (statutory) consultation feedback form

Page 7 of 17

Survey Closes 06 Aug 2025

Route section 2 - New Grimsby West Substation to Lincolnshire Connection Substation A

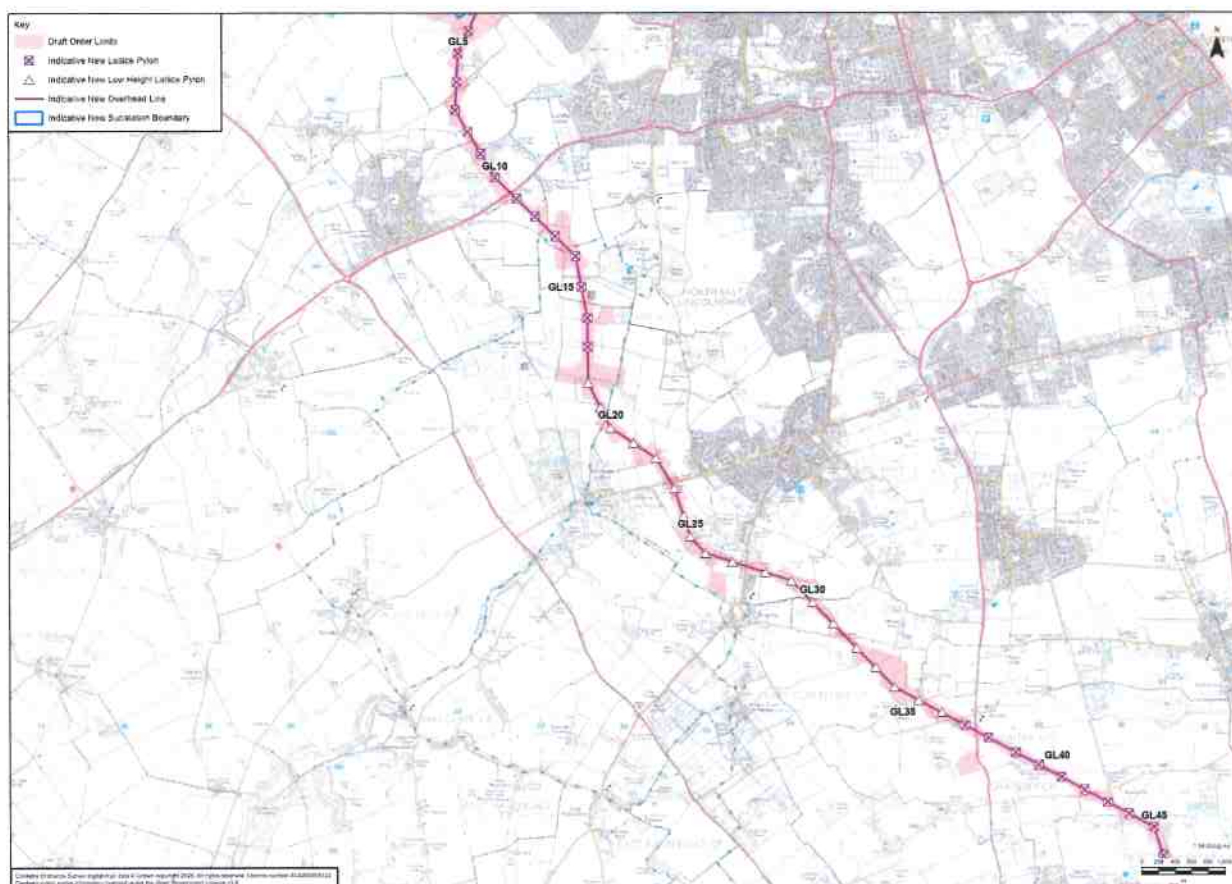
Please refer to the Stage 2 consultation document, the Design development report and the Preliminary environmental information report (PEIR) for more information on our proposals in Route section 2, including how we selected our preferred route alignment.

How our plans have developed since Stage 1 consultation

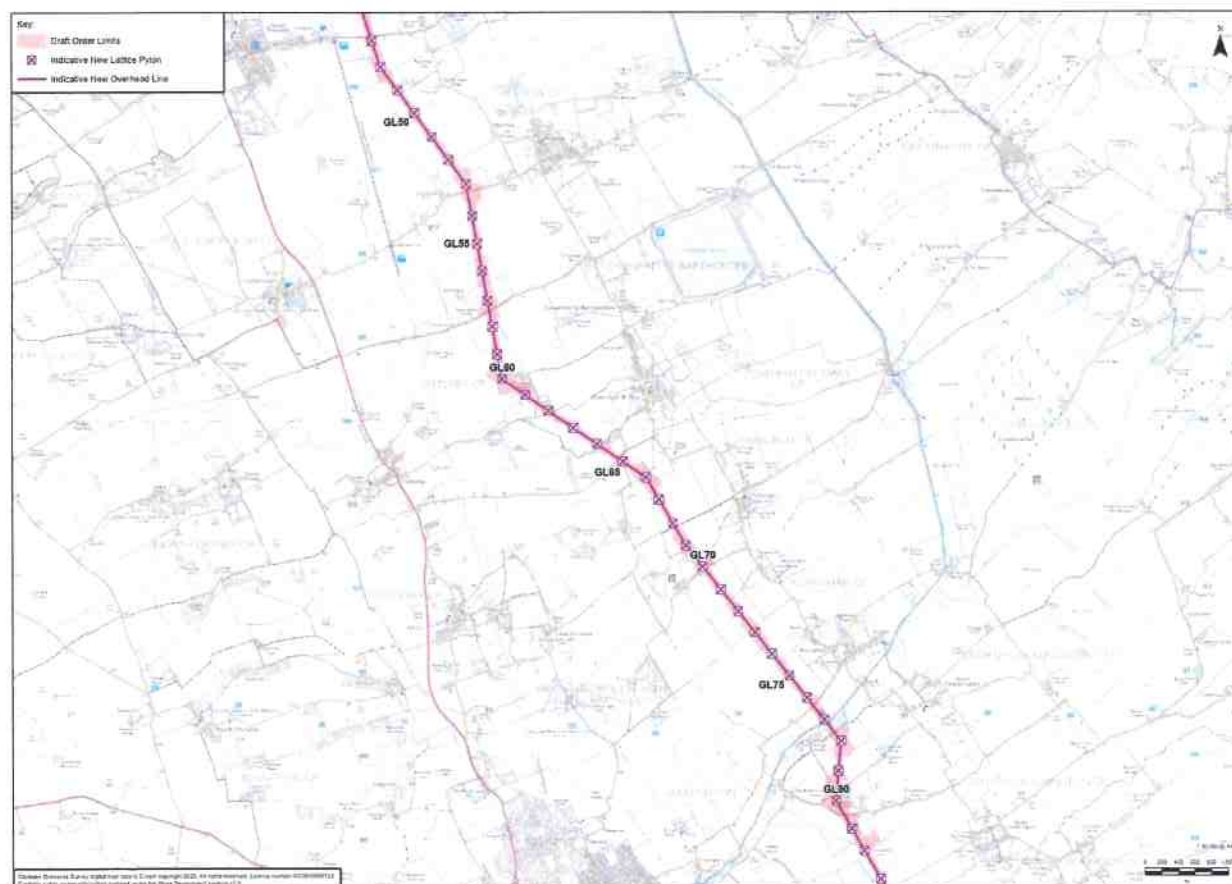
At Covenham Saint Bartholomew we have refined the proposed route alignment to consider potential impacts on users of The Thomas Centre, a holiday park for users with special educational needs and disabilities (SEND).

We are also proposing low height pylons just north of Barnoldby le Beck to Waithe to reduce potential significant effects on the Lincolnshire Wolds National Landscape. The proposed route alignment hugs the western edge of the preferred corridor on the approach to Lincolnshire Connection Substation A, to increase the distance between our proposals and Strubby airfield as much as possible.

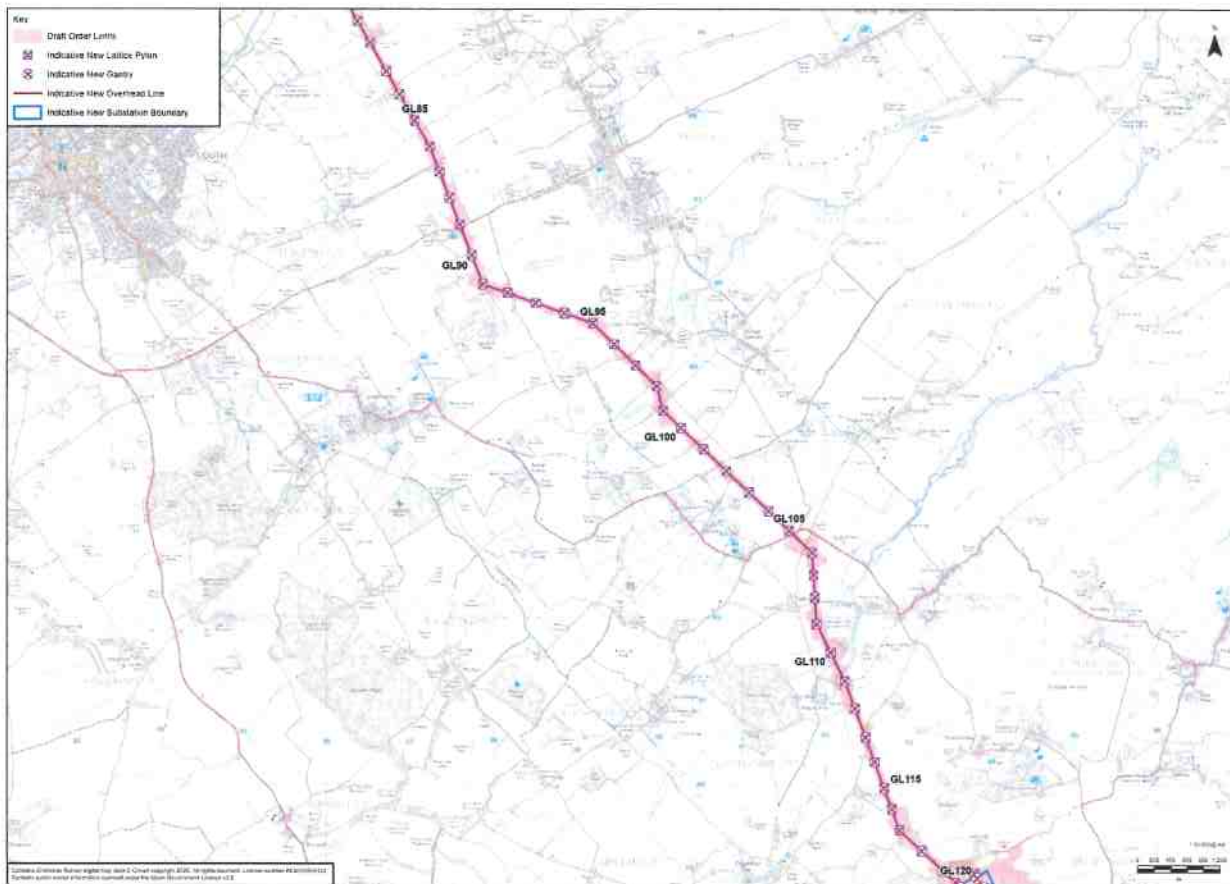
Route section 2a Laceby to North Thoresby



Route section 2b North Thoresby to Alvingham



Route section 2c Alvingham to Lincolnshire Connection Substation A



2. Do you have any comments on Route section 2, including on the points listed below?

- Our preferred alignment for the overhead line.
- Our proposals for construction, including temporary and permanent access roads and tracks, compounds and associated requirements.
- The Preliminary environmental information report.
- Environmental mitigation and opportunities for biodiversity net gain.

Page Selection

Please select from the options below and click CONTINUE to navigate to the relevant sections of the route.

If you're finished commenting on specific sections of the route, please select 'General Considerations' and click CONTINUE.

[Route sections map](#)

Route section 1 - New Grimsby West Substation

Route section 3 - Lincolnshire Connection Substation A and Lincolnshire Connection Substation B Substations

Route section 4 - Lincolnshire Connection Substation B to Refined Weston Marsh Substation Siting Zone

Route section 5 - Refined Weston Marsh Substation Siting Zone

Route section 6 - Refined Weston Marsh Substation Siting Zone to Walpole B Substation

Route section 7 - Walpole B Substation

General considerations

BACK

CONTINUE

Powered by **Tractivity**

The Great Grid Upgrade: Grimsby to Walpole Stage 2 (statutory) consultation feedback form

Page 8 of 17

Survey Closes 06 Aug 2025

Route section 3 - Lincolnshire Connection Substation A and Lincolnshire Connection Substation B Substations

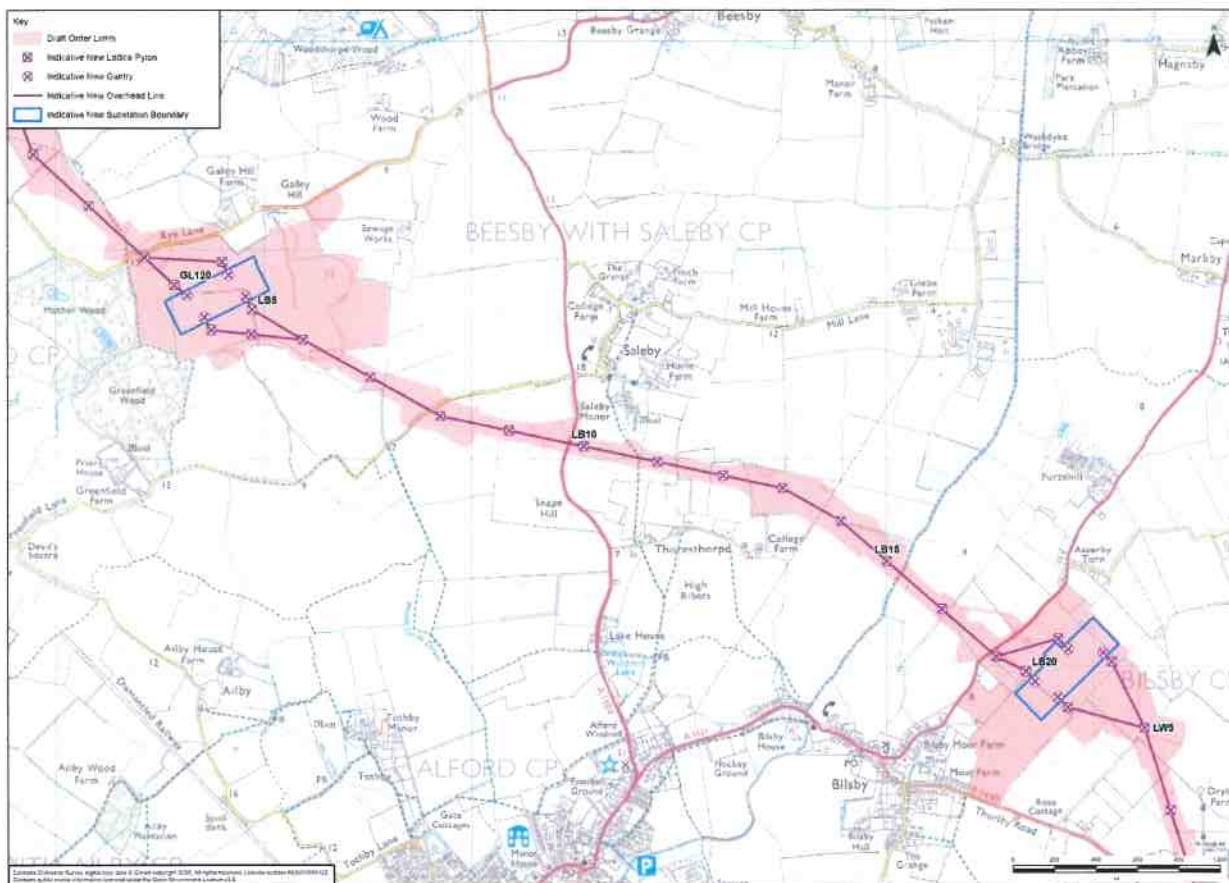
Please refer to the Stage 2 consultation document, the Design development report and the Preliminary environmental information report (PEIR) for more information on our proposals in this Route section, including how we selected our preferred route alignment and substation siting.

How our plans have changed since Stage 1 consultation

We have revised proposals in Route section 3 to reduce impacts on environmental features, manage technical constraints, and minimise effects on a nearby airfield, the Lincolnshire Wolds National Landscape (formerly Area of Outstanding Natural Beauty), and historical heritage assets.

The proposed locations for the Lincolnshire Connection Substations remain consistent with Stage 1 consultation proposals. Lincolnshire Connection Substation A is proposed east of Greenfield Wood and Mother Wood, utilising woodland for screening to reduce visual impacts and support connections while minimising impacts on Strubby Airfield. Lincolnshire Connection Substation B proposed north-east of Bilsby, balancing flood protection, distance from residential areas, and routeing flexibility.

Route section 3 Lincolnshire Connection Substation A and Lincolnshire Connection Substation B



3. Do you have any comments on Route section 3, including on the points listed below?

- The siting, design and appearance of the two new substations.
- Our preferred alignment for the overhead line.
- Our proposals for construction, including temporary and permanent access roads and tracks, compounds and associated requirements.
- The Preliminary environmental information report.
- Environmental mitigation and opportunities for biodiversity net gain.

Page Selection

Please select from the options below and click CONTINUE to navigate to the **relevant** sections of the route.

If you're finished commenting on specific sections of the route, please select 'General Considerations' and click CONTINUE.

[Route sections map](#)

Route section 1 - New Grimsby West Substation

Route section 2 - New Grimsby West Substation to Lincolnshire Connection Substation A

Route section 4 - Lincolnshire Connection Substation B to Refined Weston Marsh Substation Siting Zone

Route section 5 - Refined Weston Marsh Substation Siting Zone

Route section 6 - Refined Weston Marsh Substation Siting Zone to Walpole B Substation

Route section 7 - Walpole B Substation

General considerations

[BACK](#)

[CONTINUE](#)

Powered by **Tractivity**

The Great Grid Upgrade: Grimsby to Walpole Stage 2 (statutory) consultation feedback form

Page 9 of 17

Survey Closes 06 Aug 2025

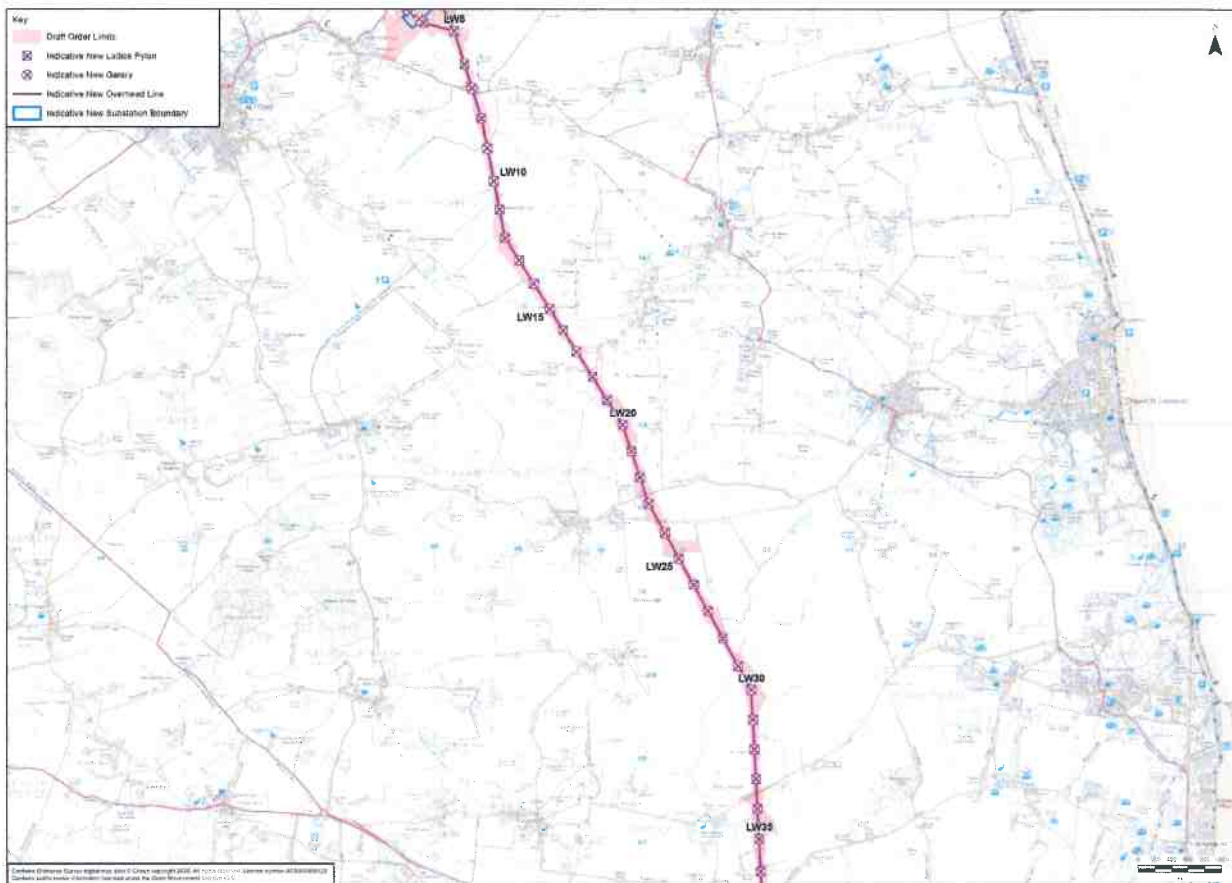
Route section 4 - Lincolnshire Connection Substation B to Refined Weston Marsh Substation Siting Zone

Please refer to the Stage 2 consultation document, the Design development report and the Preliminary environmental information report (PEIR) for more information on our proposals in this Route section, including how we selected our preferred route alignment.

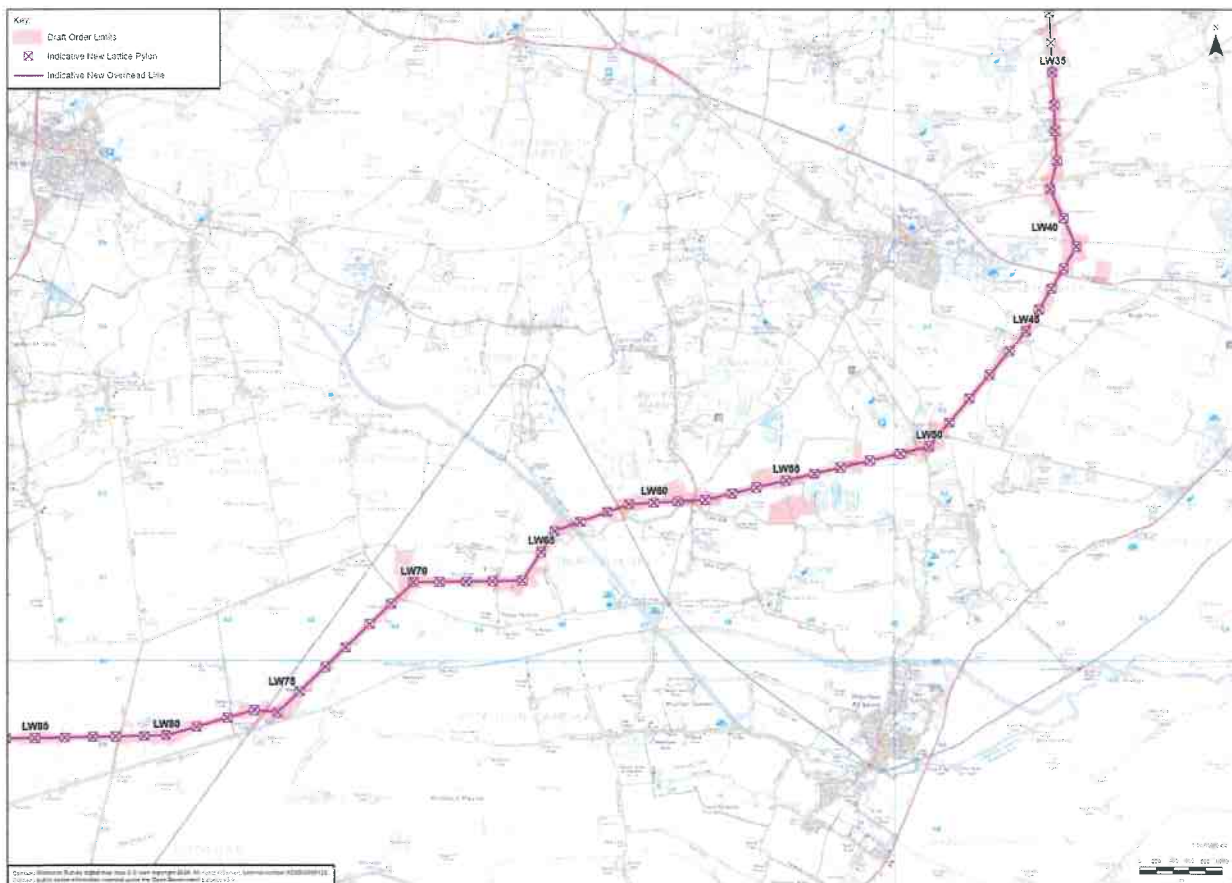
How our plans have developed since the Stage 1 consultation

The overhead line route alignment remains within the graduated swathe presented at Stage 1 consultation.

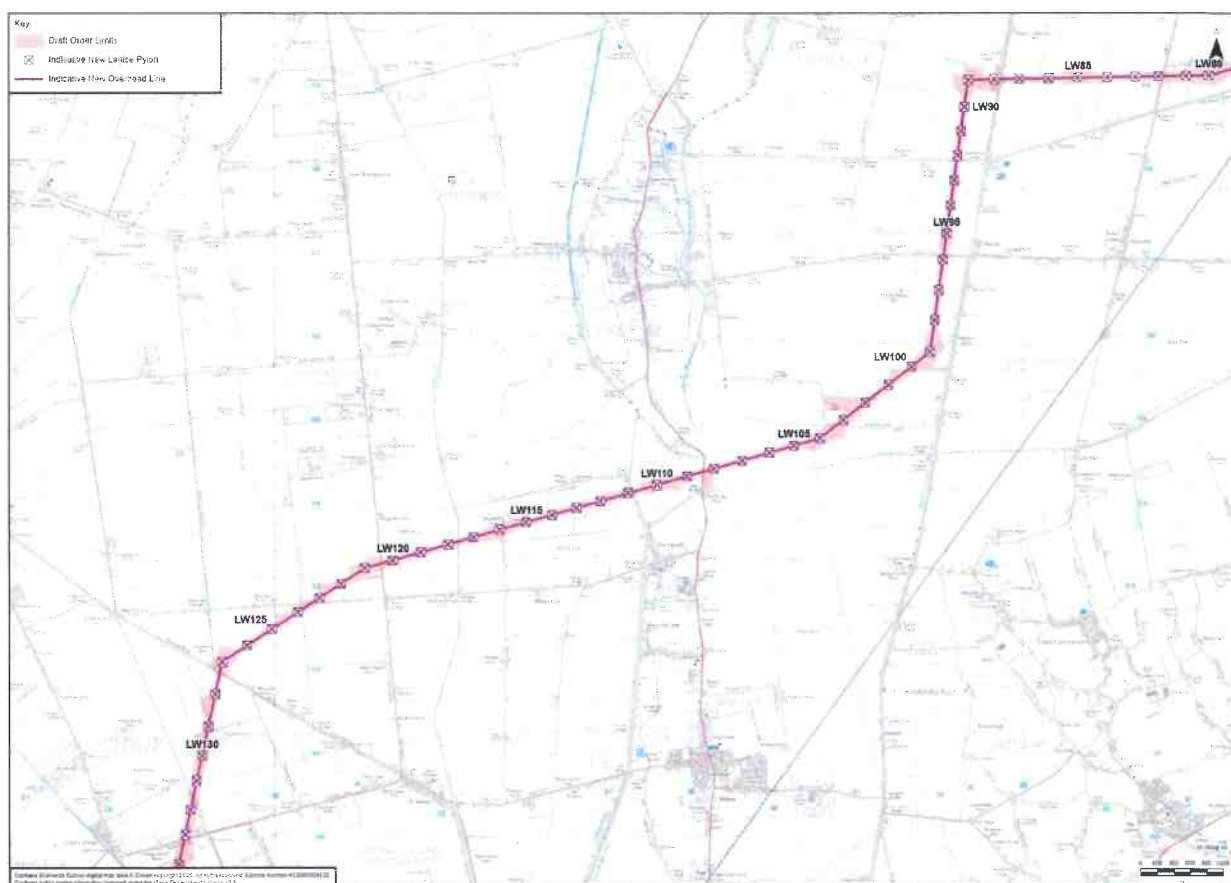
Route section 4a Lincolnshire Connection Substation B to Burgh le Marsh



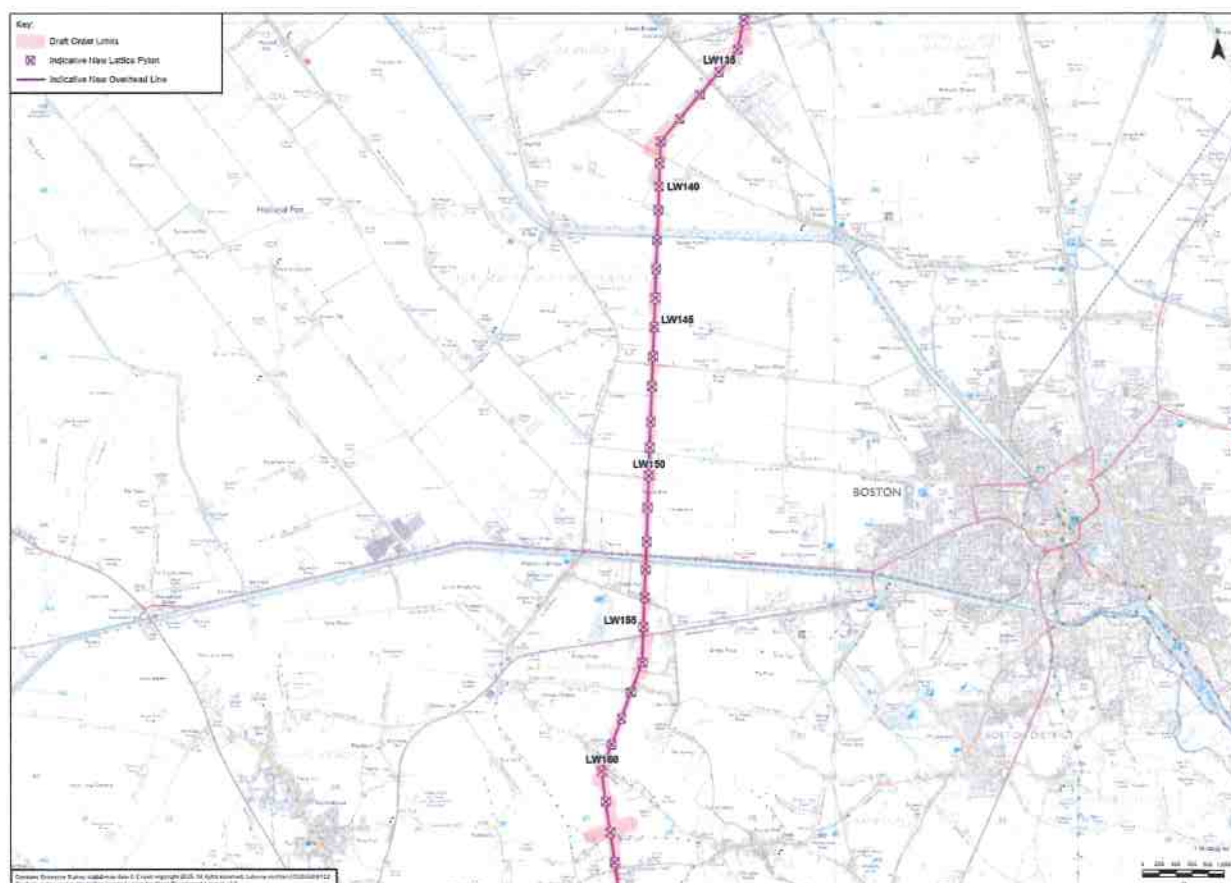
Route section 4b Burgh le Marsh to Eastville



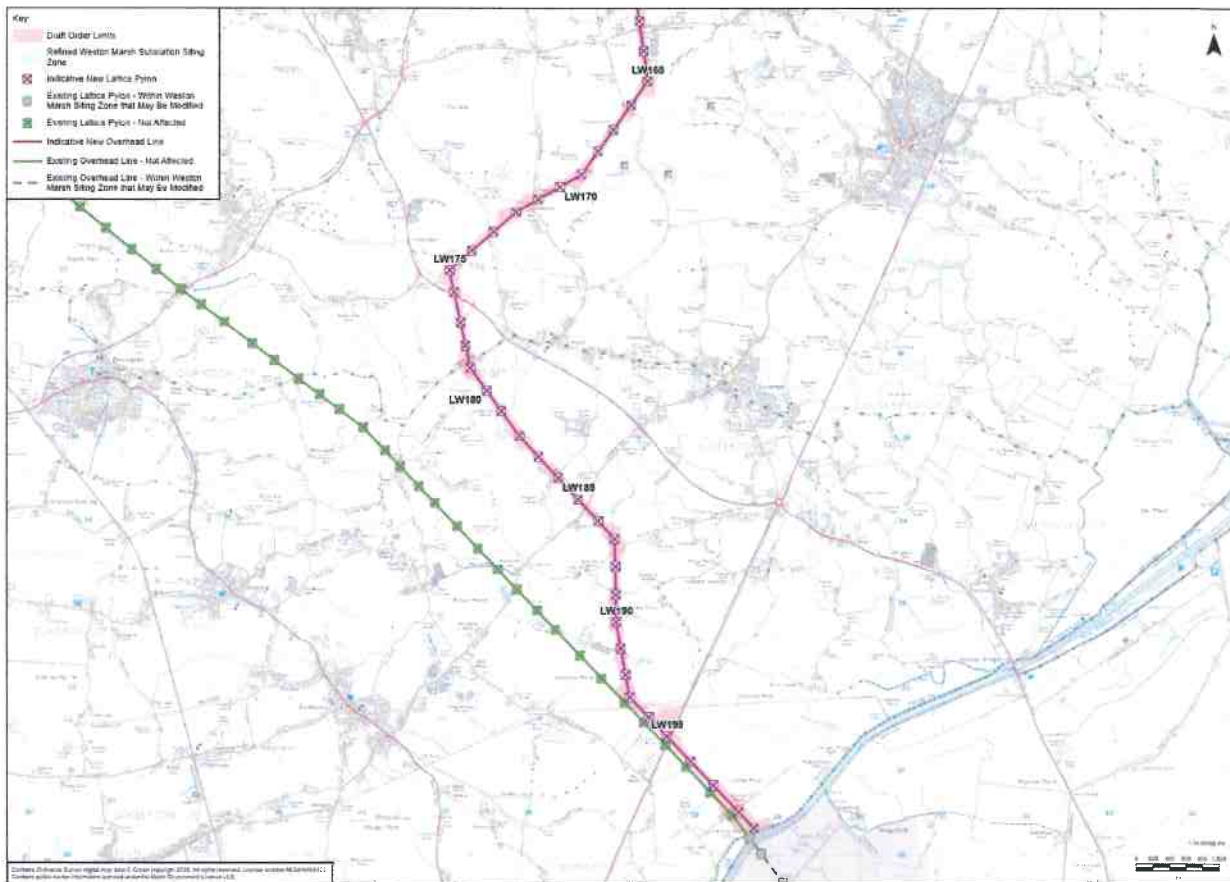
Route section 4c Eastville to Gipsy Bridge



Route section 4d Gipsev Bridge to Kirton End



Route section 4e Kirton End to Weston Marsh Substation Siting Zone



4. Do you have any comments on Route section 4, including on the points listed below?

- Our preferred alignment for the overhead line.
- Our proposals for construction, including temporary and permanent access roads and tracks, compounds and associated requirements.
- The Preliminary environmental information report.
- Environmental mitigation and opportunities for biodiversity net gain.

Page Selection

Please select from the options below and click CONTINUE to navigate to the relevant sections of the route.

If you're finished commenting on specific sections of the route, please select 'General Considerations' and click CONTINUE.

[Route sections map](#)

Route section 1 - New Grimsby West Substation

Route section 2 - New Grimsby West Substation to Lincolnshire Connection Substation A

Route section 3 - Lincolnshire Connection Substation A and Lincolnshire Connection Substation B Substations

Route section 5 - Refined Weston Marsh Substation Siting Zone

Route section 6 - Refined Weston Marsh Substation Siting Zone to Walpole B Substation

Route section 7 - Walpole B Substation

General considerations

BACK

CONTINUE

Powered by **Tractivity**

The Great Grid Upgrade: Grimsby to Walpole Stage 2 (statutory) consultation feedback form

Page 10 of 17

Survey Closes 06 Aug 2025

Route section 5 - Refined Weston Marsh Substation Siting Zone

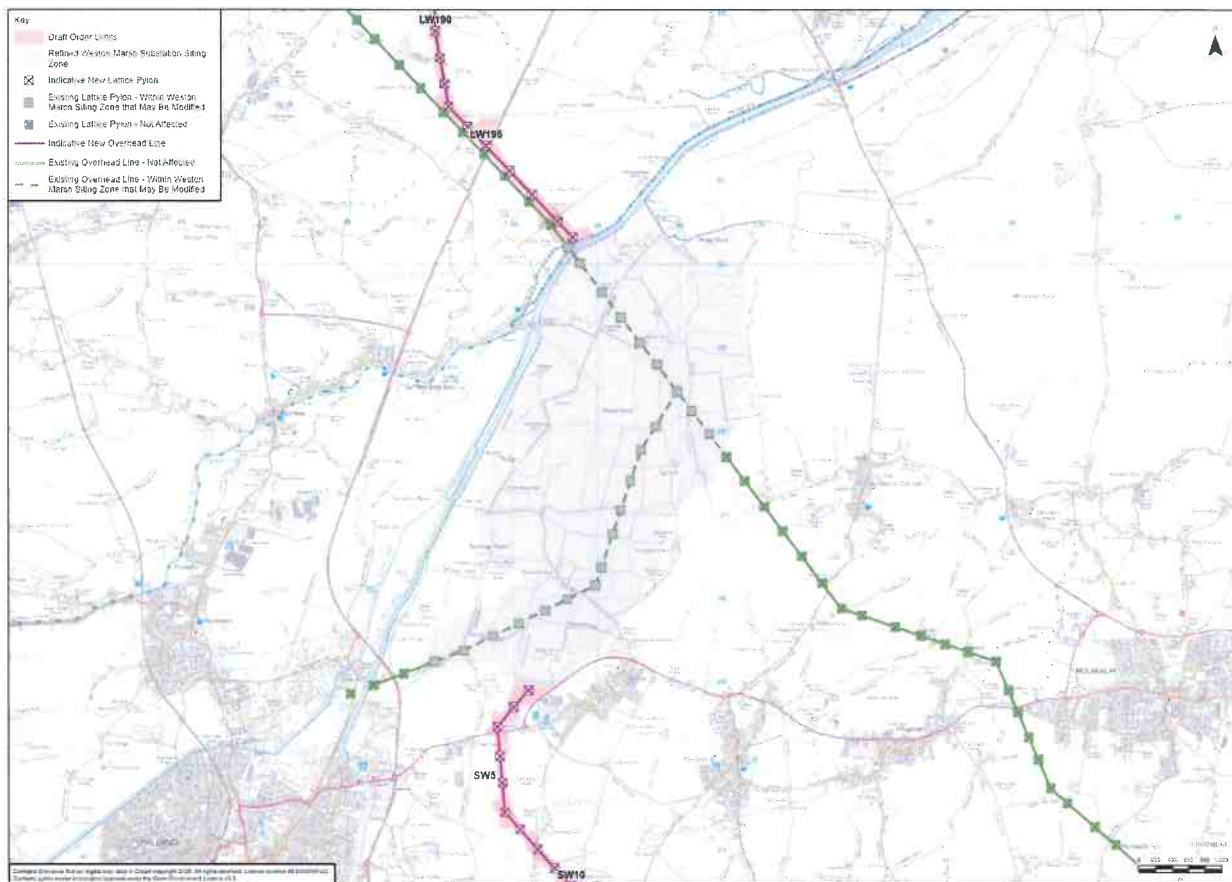
Please refer to the Stage 2 consultation document, the Design development report and the Preliminary environmental information report (PEIR) for more information on our proposals in this Route section.

How our plans have developed since the Stage 1 consultation

Since our Stage 1 consultation last year, we have been engaging with generators who are contracted to connect in this area, alongside reviewing the technical specifications required. This work has identified that a further substation in this area may be required, bringing the total number of substations to two.

As part of this consultation, we are presenting a Refined Weston Marsh Substation Siting Zone, showing the proposed area within which up to two substations could be sited. Feedback on this Siting Zone will inform more detailed design development, which will be presented in a further consultation expected in early 2026.

Route section 5 Refined Weston Marsh Substation Siting Zone



5. Do you have any comments on Route section 5, including on the points listed below?

- The area within which two substations could be sited.
- The Preliminary environmental information report.

Page Selection

Please select from the options below and click CONTINUE to navigate to the relevant sections of the route.

If you're finished commenting on specific sections of the route, please select 'General Considerations' and click CONTINUE.

[Route sections map](#)

Route section 1 - New Grimsby West Substation

Route section 2 - New Grimsby West Substation to Lincolnshire Connection Substation A

Route section 3 - Lincolnshire Connection Substation A and Lincolnshire Connection Substation B Substations

Route section 4 - Lincolnshire Connection Substation B to Refined Weston Marsh Substation Siting Zone

Route section 6 - Refined Weston Marsh Substation Siting Zone to Walpole B Substation

Route section 7 - Walpole B Substation

General considerations

BACK

CONTINUE

Powered by **Tractivity**

The Great Grid Upgrade: Grimsby to Walpole Stage 2 (statutory) consultation feedback form

Page 11 of 17

Survey Closes 06 Aug 2025

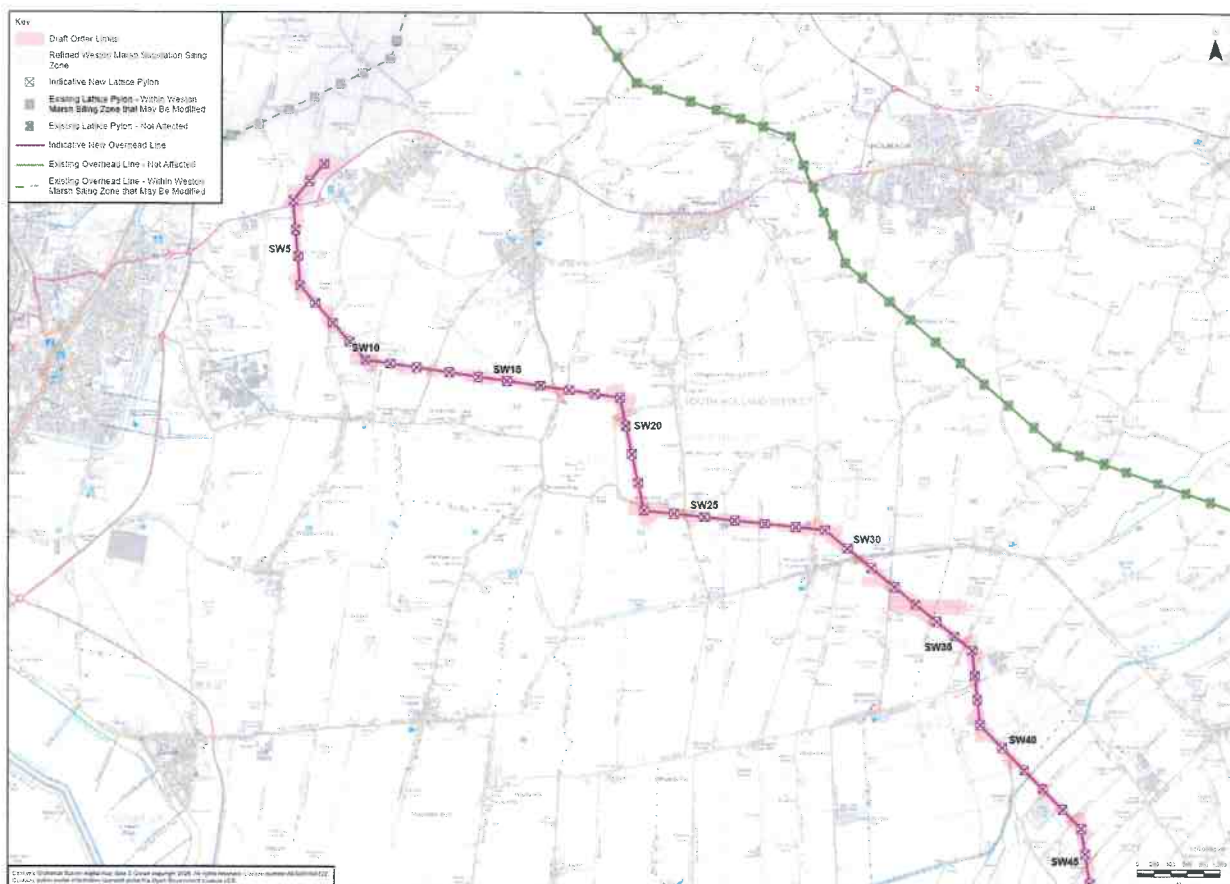
Route section 6 - Refined Weston Marsh Substation Siting Zone to Walpole B Substation

Please refer to the Stage 2 consultation document, the Design development report and the Preliminary environmental information report (PEIR) for more information on our proposals in this Route section, including how we selected our preferred route alignment.

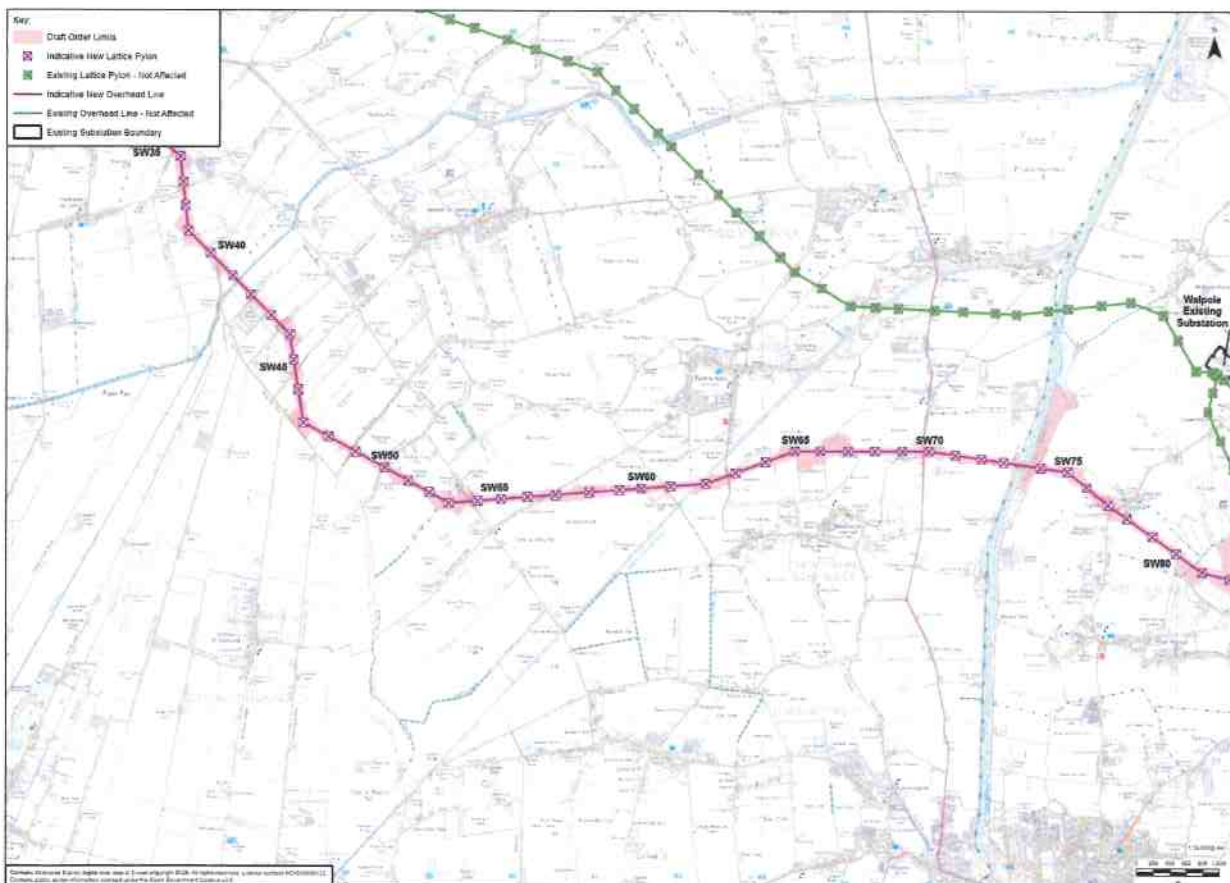
How our plans have developed since the Stage 1 consultation

We have refined proposals in Route section 6 to reduce potential impacts on local villages, while managing technical constraints and cumulative impacts of the Project and nearby developments. We have also refined the route slightly north between Tydd St Giles and Ingleborough to avoid a high-pressure gas pipeline.

Route section 6a Weston Marsh Substation Siting Zone to Holbeach St Johns



Route section 6b Holbeach St Johns to Walpole B



6. Do you have any comments on Route section 6, including on the points listed below?

- Our preferred alignment for the overhead line.
- Our proposals for construction, including temporary and permanent access roads and tracks, compounds and associated requirements.
- The Preliminary environmental information report.
- Environmental mitigation and opportunities for biodiversity net gain.



Page Selection

Please select from the options below and click CONTINUE to navigate to the relevant sections of the route.

If you're finished commenting on specific sections of the route, please select 'General Considerations' and click CONTINUE.

[Route sections map](#)

Route section 1 - New Grimsby West Substation

Route section 2 - New Grimsby West Substation to Lincolnshire Connection Substation A

Route section 3 - Lincolnshire Connection Substation A and Lincolnshire Connection Substation B Substations

Route section 4 - Lincolnshire Connection Substation B to Refined Weston Marsh Substation Siting Zone

Route section 5 - Refined Weston Marsh Substation Siting Zone

Route section 7 - Walpole B Substation

General considerations

BACK

CONTINUE

The Great Grid Upgrade: Grimsby to Walpole Stage 2 (statutory) consultation feedback form

Page 12 of 17

Survey Closes 06 Aug 2025

Route section 7 - Walpole B Substation

Please refer to the Stage 2 consultation document, the Design development report and Preliminary environmental information report (PEIR) for more information on our proposals in this Route section, including how we selected our preferred route alignment and substation siting.

How our plans have developed since the Stage 1 consultation

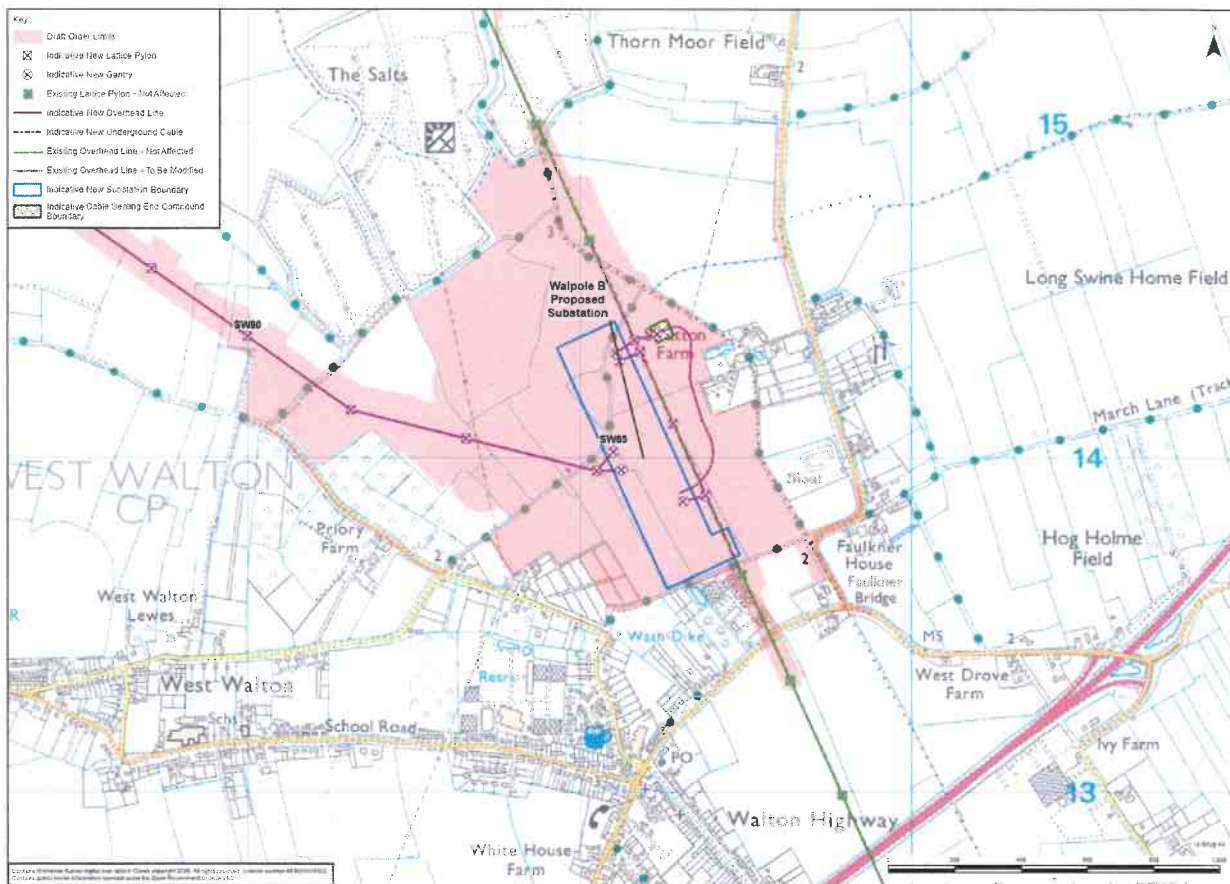
The proposed location of Walpole B Substation, near to the existing Walpole substation, has been preferred as it minimises work required to divert the existing overhead lines. Additionally, this location avoids existing constraints from high-pressure gas pipelines and the nearby Rose and Crown Solar Farm, while benefitting from nearby existing visual screening to mitigate potential visual impacts on nearby residential areas.

Interactions with National Grid's EGL 3 & EGL 4

Walpole B Substation is shown in both the Grimsby to Walpole and EGL 3 and EGL 4 projects because both projects need the substation infrastructure in this location. Either project could build out this substation either in whole, or in part, in line with any potential planning consent.

We encourage you to provide any comments on Walpole B substation specifically in question 7.

Route section 7 Walpole B Substation



7. Do you have any comments on Route section 7, including on the points listed below?

- The siting, design and appearance of the new substation.
- Our preferred alignment for the overhead line.
- Our proposals for construction, including temporary and permanent access roads and tracks, compounds and associated requirements.
- The Preliminary environmental information report.
- Environmental mitigation and opportunities for biodiversity net gain.

Page Selection

Please select from the options below and click CONTINUE to navigate to the relevant sections of the route.

If you're finished commenting on specific sections of the route, please select 'General Considerations' and click CONTINUE.

[Route sections map](#)

Route section 1 - New Grimsby West Substation

Route section 2 - New Grimsby West Substation to Lincolnshire Connection Substation A

Route section 3 - Lincolnshire Connection Substation A and Lincolnshire Connection Substation B Substations

Route section 4 - Lincolnshire Connection Substation B to Refined Weston Marsh Substation Siting Zone

Route section 5 - Refined Weston Marsh Substation Siting Zone

General considerations

[BACK](#)

[CONTINUE](#)

The Great Grid Upgrade: Grimsby to Walpole Stage 2 (statutory) consultation feedback form

Page 13 of 17

Survey Closes 06 Aug 2025

General considerations

8. Is there anything else you would like us to consider as we develop our proposals? Please provide details below.

Page Selection

Want to go back and make further comments about specific parts of the route? Please select **'Back to navigation'** and click CONTINUE.

If you're done, please select **'Finalise feedback'** and click CONTINUE. Please note past this point you won't be able to comment on specific sections of the route.

* Mandatory

Back to navigation

Finalise feedback

BACK

CONTINUE

The Great Grid Upgrade: Grimsby to Walpole Stage 2 (statutory) consultation feedback form

Page 14 of 17

Survey Closes 06 Aug 2025

About you

We would be grateful if you could answer the following, optional, demographic questions. We will use the information we receive to help understand whether our consultation has been useful to people of different backgrounds and requirements, and only in accordance with our Data Privacy Statement, as set out later in this form.

We may publish a summary of the results, but no information about an individual would be revealed. The answers you provide to some of these questions are defined as 'special category data'. If you agree to provide this information, you can withdraw your permission for us to use it in our reports at any time. To withdraw your permission, please contact us via email at contact@g-w.nationalgrid.com

9. How would you describe your interest in the Grimsby to Walpole project?

Local resident

Local representative (e.g. Councillor, MP)

Potentially affected landowner or tenant/occupier (please include your landowner reference number below if known)

Local business owner

Regular visitor to the area

Local interest group member (please specify below)

Statutory organisation (please specify below)

Other

Please provide further details here if required:

10. What is your gender?

Male

Female

Non-binary

Prefer not to say

11. Do you consider yourself to be a person with a disability?

Yes

No

Prefer not to say

12. How would you describe your ethnic background?

White English/Welsh/Scottish/Northern Irish/British

Irish

Gypsy or Irish Traveller

Any other White background (please state below)

White and Black Caribbean

White and Black African

White and Asian

Any other Mixed or Multiple ethnic background (please state below)

Asian/Asian British

Indian

Pakistani

Bangladeshi

Chinese

Any other Asian background (please state below)

Black African

Black Caribbean

Black British

Any other Black/African/Caribbean background (please state below)

Arab

Any other ethnic group (please state below)

Prefer not to say

If other, please state here:

13. What is your age?

- ☐ Under 16
- ☐ 16-24
- ☐ 25-34
- ☐ 35-44
- ☐ 45-54
- ☐ 55-64
- ☐ 65+
- ☐ Prefer not to say

BACK

CONTINUE

The Great Grid Upgrade: Grimsby to Walpole Stage 2 (statutory) consultation feedback form

Page 15 of 17

Survey Closes 06 Aug 2025

Data privacy statement

National Grid is committed to **protecting your personal information**.

Whenever you provide such information, we are legally obliged to use it in line with all applicable laws concerning the protection of personal data, including the UK General Data Protection Regulation (UK GDPR).

How will National Grid use the information we collect about you?

We will use your personal data collected via this consultation for a number of purposes, including:

- to analyse your feedback to the consultation
- to produce a Consultation Feedback Report, based on our analysis of responses (individuals will not be identified in the Report)
- to write to you with updates about the results of the consultation and other developments (if you do not wish to be contacted, you can submit the form anonymously by clicking the box at the top of the final page)
- to keep up-to-date records of our communications with individuals and organisations.

Any personal information you include in this form will be handled and used by (or made available to) the following recipients, to record, analyse and report on the feedback we receive:

- National Grid
- the Planning Inspectorate (who will consider our application for consent to build the Project - any details published as part of this process will be anonymised)
- the Secretary of State (who will take the decision on our application)
- our legal advisers
- consultants working on behalf of National Grid.

Where you provide feedback as part of this consultation which is relevant to other National Grid projects, it may be included as indirect feedback for the other project(s).

What rights do I have over my personal data?

Under the terms of the UK GDPR you have certain rights over how your personal data is retained and used by National Grid. For more information, see our full data privacy statement: nationalgrid.com/privacy-policy.

The Great Grid Upgrade: Grimsby to Walpole Stage 2 (statutory) consultation feedback form

Page 16 of 17

Survey Closes 06 Aug 2025

Next steps

This consultation closes at **11:59pm on Wednesday 6 August 2025**. We cannot guarantee that responses received after this time will be considered.

We will take all the feedback we receive during the consultation period into consideration as we continue to develop our plans for Grimsby to Walpole. We will summarise all feedback, and how we have considered it, in our Consultation Feedback Report which will form part of our application for development consent.

The Planning Inspectorate will review and examine our application and encourage the submission of views from statutory stakeholders such as local authorities as well as communities, and other interested parties. They will then make a recommendation to the Secretary of State for Energy Security and Net Zero, who will decide whether to grant consent.

Contact us

Please get in touch if you have any questions about our proposals for Grimsby to Walpole.

Call us: **0808 258 4395** (lines are open Monday to Friday, 9am–5:30pm)

Email us: **contact@g-w.nationalgrid.com**

Write to us: **FREEPOST G TO W**

(no stamp or further address details are required)

Information for landowners

If you are a landowner and want to talk to our Lands team, please contact Dalcour Maclaren by emailing us at **g-w@dalcourmaclaren.com** or by calling us on **0333 034 7961**.

[BACK](#)

[CONTINUE](#)

Your details

Page 17 of 17

Survey Closes 06 Aug 2025

Submit answers anonymously?

First Name

* Mandatory

Last Name

* Mandatory

Email

* Mandatory

Organisation Name

Your postcode

Almost done...

Thank you for taking the time to complete our survey. By Clicking 'Submit Survey' you give us permission to analyse and include your response in our results. Your response cannot be edited after this point.

BACK

SUBMIT SURVEY

Powered by **Tractivity**